



# DONG MA?

## Extender Pack 01

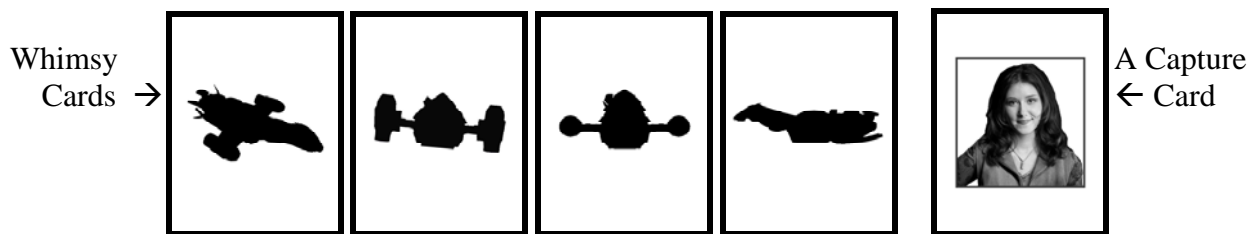
*How whimsical is your brainpan?*

NOTE: *This is NOT a stand-alone game. The original DONG MA? game is required!*

**CONTENTS:** These expansion rules, 32 new *Dong Ma?* cards and 4 new *Wave* cards. Wacky fun included!

### NEW RULES:

**Wave cards:** All 4 new cards are Whimsy cards, so to make things interesting just shuffle them in!



***Dong Ma?* cards:** 12 of the cards are a new feature called Capture cards. Capture cards are images of characters from Firefly and Serenity. When you see one of these, you must be the first to shout a quote by that character that begins with the letter on the current *Wave* card. An example: Jayne is the *Dong Ma?* card showing, and the *Wave* card is the letter 'I', so "I don't wanna explode!" would be perfect. If that *Wave* card is a Whimsy, then any quote will do, unless the Chinese Whimsy is showing, in which case you must quote any dialog that uses Chinese and was spoken by that character. An example of Chinese Dialog: Inara is the *Dong Ma?* card showing so "Oh, *go se*." would be a line of hers using Chinese.

### OPTIONAL RULES:

- Never Goes Smooth: Remove all the Whimsy cards from the *Wave* cards
- Hard Burn: Play the first time through the *Wave* deck without Whimsy cards, then shuffle them in
- Official 262: All Capture cards count Double when you tally up at the end of the game

Game Design: John Reyman (aka TenthCrewMember) of Cyclopien Sheep Productions

Images: Copyright FOX, UNIVERSAL, Joss Whedon and anyone else I forgot who should have credit.



**A  
CHARACTER  
FROM THE  
SERENITY  
COMICS**

**SOMETHING  
FOUND ON  
MIRANDA**

**AN ITEM  
BELONGING  
TO SIMON**

**AN ITEM  
SEEN IN THE  
*ST. LUCY'S*  
*HOSPITAL*  
ON ARIEL**

**SOMETHING  
SEEN AT THE  
EAVESDOWN  
DOCKS**

**A  
TOWN**

**AN  
ENEMY OF  
THE CREW  
OF *SERENITY***

**AN ITEM  
SHEPHERD  
BOOK  
HELD OR  
USED**

**AN ITEM  
SEEN IN  
A DELETED  
SCENE**

**SOMEONE  
Zoë  
FIGHTS  
WITH**

**SOMETHING  
SEEN IN  
SERENITY  
VALLEY**

**AN ITEM  
FOUND IN  
HAVEN**

**A BODY  
PART  
THAT IS  
WOUNDED**

**A  
COLOR  
SOMEONE  
MENTIONS**

**AN ITEM  
SEEN IN  
BADGER'S  
OFFICE**

**SOMEONE  
WHO IS  
PUNCHED  
OR HIT**

**SOMEONE  
HELD  
AGAINST  
THEIR WILL**

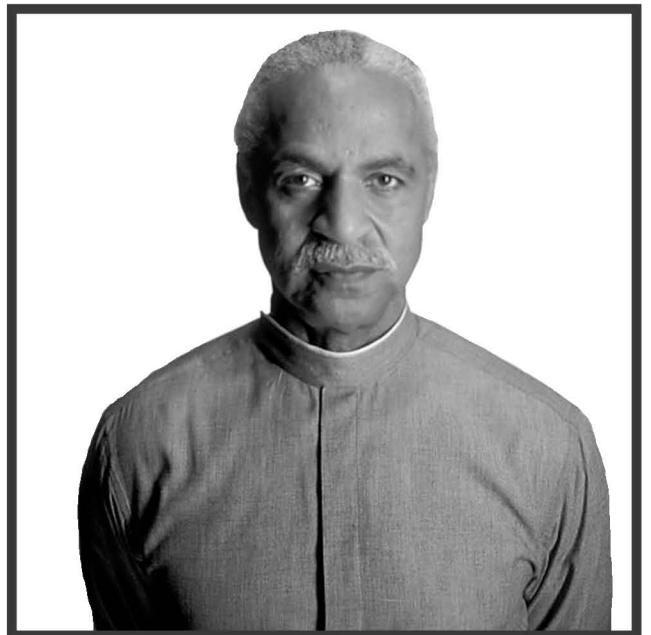
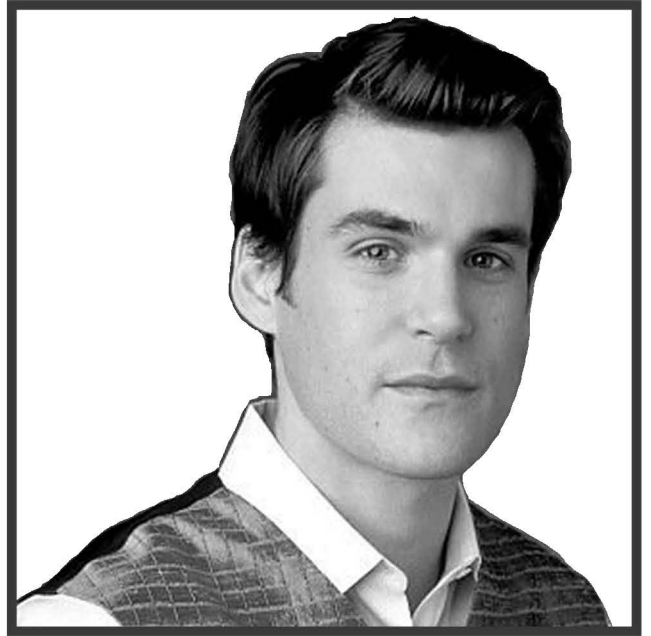
**A NON-GUN  
ITEM THAT  
INJURES  
OR KILLS  
SOMEONE**

**SOMEONE  
THAT USES  
OR REFERS  
TO MONEY  
OR WEALTH**

**SOMEPLACE  
CHINESE  
WRITING  
IS SEEN**









WAVE

WAVE

WAVE

WAVE

